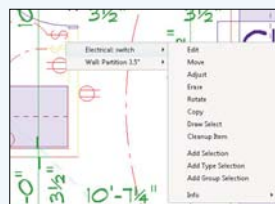
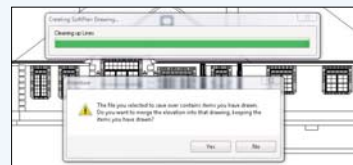


Information Popup Added to the Right Mouse Button

Selecting the right mouse button presents a context appropriate menu. If there are multiple items near the cursor, a locate type menu appears. The menu selection then changes depending on the type of object under the cursor to display appropriate drawing actions. If no object is under the cursor, a mode appropriate draw menu will appear. This feature greatly reduces the amount of mouse movement required when working in SoftPlan, enhancing the drawing speed.



Save Elevations, Sections, and Roof Plans Has an Option to Control What Items Are Replaced if a Previous Version of a Drawing Exists



If a generated drawing like an elevation or section is saved over an existing version of the same drawing, any items that were placed on the original can be automatically merged into the new drawing. To change a gable roof to a hip on a fully annotated, dimensioned, and painted elevation is as simple as saving the revised elevation and opting to maintain the user drawn items from the original.

SoftList Materials Will Export to QuickBooks® Estimates And Purchase Orders

SoftList integrates directly with QuickBooks®. A SoftList report or portion of a report can be exported into the QuickBooks® accounting system. The information will import into QuickBooks® as your choice of an Estimate or a Purchase Order by simply opening both QuickBooks® and SoftPlan, highlighting the information you wish to move and selecting export. This opens up a new level of integration for the majority of SoftPlan users; those that use QuickBooks® for their accounting.

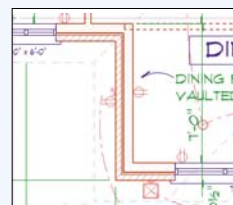
Partial Option Added to the Multi Drawing Command



Multi Drawing will allow a partial drawing to be added to a Multi Drawing. Selecting Display Portion of Drawing prompts for the part of the drawing to be displayed and the scale to be used. This is useful for displaying portions of a large drawing at an increased scale for detailing purposes.

Sketched and Illustrated Mode Added to SoftView

SoftView contains two new modes. Both present the model in a less rigid way. Sketch emulates a hand sketched look while Illustrated shows the model as it would appear drawn in pen and ink. Both allow for the optional inclusion of textures and shadows to create varied appearance within the mode.



Display Print Pen Style Option Added to Visible Items

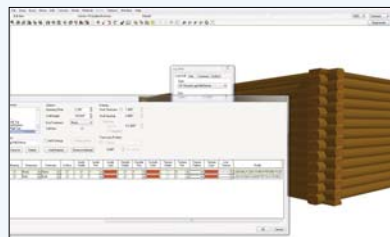
Display Print Style has been added as a Visible Items option. This draws lines on the screen at the width defined by the pen used to print that line.

Selection Sets Added for Item, Type, and Group Selection Sets

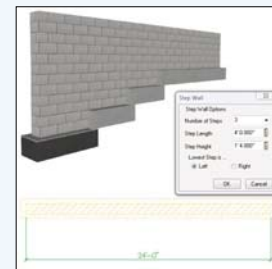
Operations in SoftPlan can be performed on sets of items. Selection sets are created by holding the control key and picking the items to add to the set. Once the set is created, the action to be performed is chosen. For example, if you wanted to erase some unrelated items on a drawing you would press and hold the control key with the mouse select or cross the items to be erased (they will highlight). Once the set is complete, release the control key, and select erase. The entire content of the set will be removed.



Profiles Added to Beams Allowing for Creations of Shapes



Wall Materials can be defined with user defined Profiles. The Profile shapes are stacked directly on top of each other when the wall is viewed in SoftView. A Log wall is a great example of a material that would be defined this way.

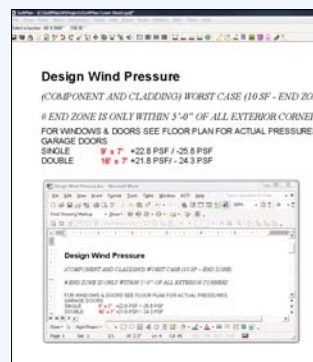


Step Wall Command Added to Edit

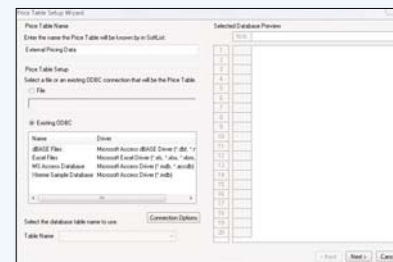
Based on the inputs of number, length, height and start point of step, the Step Wall command takes the existing wall and automatically creates individual wall sections of required length, height, and offset.

Paste from Windows Clipboard Added

The contents of the Windows clipboard can now be pasted directly into the SoftPlan drawing. Four types of items can be created in the drawing: Text places unformatted text into the drawing, Multi Format Text is used to paste text from applications such as Microsoft Word that maintains all of the formatting, Metafile Image for items from Excel, and Image for raster files including raster versions of .PDF files.



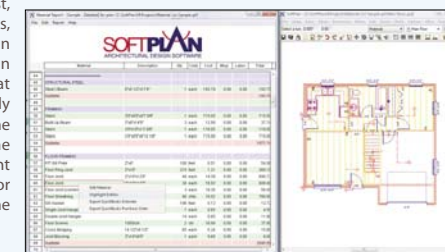
ODBC Connections Can Be Made to Outside Data Sources that Can Be Stored Externally to SoftList in any ODBC Compliant Database via the Price Table



SoftList can now communicate with any ODBC (Open Database Connectivity) compliant data source. This allows items such as prices to be automatically kept up to date by being able to access information that is stored somewhere other than SoftList. For example, item pricing can be stored in a purchasing system or a Microsoft® Excel spreadsheet and updated automatically, so there is no need to input pricing that exists in another ODBC data source into SoftList.

Highlight Material Command Added to SoftList

A material in SoftList is now connected directly to an item in SoftPlan. If you select a material on a generated material list, and select Highlight entities, the items on the SoftPlan drawing that were used in the calculation of that material will automatically display. For example, if the material selected from the report is Sill Gasket, Highlight material will display the floor plan and highlight all of the walls that have a sill gasket.



3D reView Added



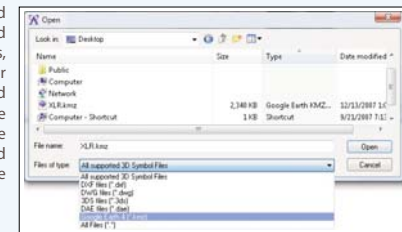
SoftPlan reView has the ability to author and view a 3D model of the house in addition to the 2D drawing of the house. The model is exported as it appears on the author's screen and can be viewed on the client's screen. The reView model can be rotated and viewed from any location inside or out. This is a great tool for showing a client what the house is going to look like and is far more flexible than movie files that are sometimes used for the same purpose.

Draw Profile Command Added to SoftView

Version 14 allows many items to be drawn or placed directly on the 3D model. In addition to items such as roofs and openings, a new item type, Profile, can be added directly to the model. A user defined shape is extruded along a three dimensional poly line. This can be used to place items such as a complex frieze.

.3Ds File and SketchUp® File Import/Export Added to SoftView

The new Symbol Wizard command allows 3D symbols to be imported directly from SketchUp®. 3DS files, which is the native file format for 3D studio®, can also be imported directly by the Symbol Wizard. The addition of .3DS and .KMZ to the existing .DXF and .DWG should make most 3D content available for import into SoftPlan.



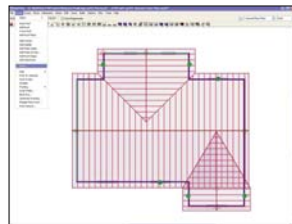
Additional New Features

AREA

- Area Hole Rectangle and Poly Command Added
- Area Schedule Command Added
- Color Added to the Area Tally Box
- Drawings in Assembled Floor List Option for Schedules
- Duplicate Added to Area
- Repeat Edit Added to Area
- Show Polygon Shaded in Visible Items Will Shade Area

BEAM

- Beam Definitions Can Utilize Profile
- Beams Can Be Added in Roof Mode
- Dimension and Extension Placement Control Added
- End Style Selection Added (Rake/Plum & Profile)
- Fit to Roof or Ceiling Added
- Length Displayed in the Edit Dialog
- Profiles Added to Beam Ends
- Steel Beams with Plates Added



Beams Can Be Added in Roof Mode

BUILDING OPTIONS

- Ability to Lock Added
- Added to Type Erase
- Default Visibility Section Added
- Number of Building Options Increased to 250
- Status Bar Selector Added Displaying Current Building Option

CABINETS

- Adjust of Cabinet Run Allowed
- Allow Countertop Property Added to Symbol
- An Exploded Countertop Maintains a Dashed Line Type
- Area Added to Countertop Tab
- Auto Cabinet Placement Improved
- Cabinets on Cross Sections Are Saved as Symbols
- Cabinets with Different Heights Show a Break Line in Plan

- Countertop Length Added to Edit Dialog Cabinet
- Countertops Adjacent to Each Other at Different Heights Display Overhangs
- Countertops Have a Linestyle Option
- Doors Can Be Removed
- Join Cabinet Option Added to Edit Cabinet Run Tab
- Legs Can Be Added to the Cabinets
- Microwave Cabinet Added to Wall Cabinets
- Name Override Added
- Outside Corner Cabinets Added
- Snap Points Added to Elevation Cabinets
- Top Height Added to the Run Tab on the Edit Dialog
- Top Height Field Option Added When Placing Cabinets
- Top Surface Extracts with a Material Thickness
- Two Drawer Style Cabinets Added

CEILING

- Ceilings Included When Drawing Rooms in Room Mode
- Dimensions & Extensions Can Be Added in Ceiling Mode
- Multiple Floor Ceiling Added
- Stair Ceiling Board Has Control of Finish

COPY

- Select Move Point Option Added to Copy Block

CROSS SECTION

- Cut Lines Can Be Added to Any Drawing in the Assemble Floors List
- Lines in Elevation Are on a Different Layer Than Lines in Section on a Saved Cross Section

DECK

- Chamfer Deck Board Option Added
- Deck Joists Can Have Shaped Ends
- Deck Stairs Block Display of Deck Lines
- Move a Wall & Any Abutting Rails Are Automatically Adjusted
- Overlay Displays Deck

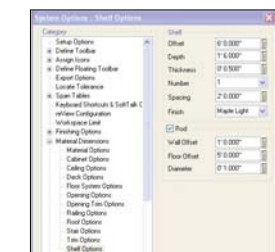
DIMENSIONS & EXTENSIONS

- Auto Dimension Added to Default Toolbar
- Auto Dimension Improved
- Auto Extension & Dimension Command Added
- Dimension Arc Number Can Be Relocated via Move
- Dimension Numbers Are Automatically Placed to Avoid Other Items
- Dimension Point Available in All Modes
- Distance Command Ignores Notes
- Distance Command Includes Countertops
- Drawing Dimension Options Reset to System Added

- Edit Dimension Can Split the Difference
- Extension Start Distance Value Added to Dimension Options
- Inner String Placement Dimension Option Added
- Items Dimensioned via Dimension Point Can Be Relocated via an Edit of the Dimension
- Metric Dimension Edit Displays in Drawing Units
- Move a Dimension Will Attach on all the Dimensions in the String Move
- Railing Post Uses Shape Extension Option for Placement
- Repeat Edit Added to Dimension
- Set Distance Between Has Access to the Attach Flag
- Set Distance Between Will Work When One of the Locations Is the End of a Wall

DRAW

- Add End Panel Option Added to Rod & Shelf
- Drawings in Memory Are Indicated With a Graphic Icon on the Status Bar Drawing List
- Elapsed Time Has Reset Option Added
- Multi Drawing Zoom and Pan Can Be Used While Placing a Drawing Within the Multi
- Multi Drawing Displays Current Mode in Drawing Selection Dropdown When Multiple Copies Present
- Right Click on an Item or Selection Set Gives Quick Select Options to Modify the Item
- Rod & Shelf Command Allows Multiple Shelves



Rod & Shelf Command Allows Multiple Shelves

EDIT

- Access to Wall Definition Added to Wall Beam Edit Dialog
- Answer to the "Align" Question on Edit Wall Is Maintained for the Entire Session

- Block Form Polygon Command Added
- Change Wall Will Not Introduce a Wall Thickness if the Source Wall Did Not Have a Thickness
- Item Cleanup Added to Each Item
- Paste from Windows Clipboard Command Added
- Step Wall Command Added

ELECTRICAL

- Additional Light Fixtures Added



Additional Electrical Light Fixtures Added

- Fixture Placement on Double Hip Ceilings Improved
- Locates Can Be Added to the Toolbar in Electrical Mode
- Connection Symbol Added; Used When Connections Go up a Stairway
- Connection Visibility Separated from Symbol Visibility
- Double, Triple, Quad Switch Added
- Electric Meter Symbol, Switch with Outlet, and Weather Proof Added to Library

ELEVATION

- Sun Studies Can Be Completed in Elevation

ERASE

- Items Must Be at Least Partially on Screen to Be Erased; to prevent site polys from being removed

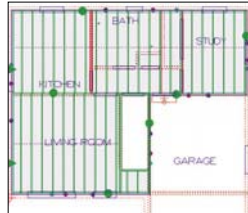
FILE

- DWG and DXF Export of a SoftView Model Can Include Textures
- DWG AutoCAD® 2007 Files Import
- DWG/DXF Export Layers Can Be Assigned to Every Object Type
- DWG/DXF Import Brings in Meshes
- DWG/DXF Import of Drawings with Mirror and Rotated Blocks Improved
- DWG Import of Splines Improved
- DXF/DWG Import Is Faster
- DXF/DWG Import, Items Located Outside the SoftPlan World Will Be Automatically Moved to the SoftPlan World Where Possible

- DXF/DWG Import of Drawings Containing Proxy Items Improved
- Import DXF With Multi Line Notes Improved
- Metafile Import Added
- Partial Option Added to Multi Drawing Command

FLOOR SYSTEM

- Cleat Command Added
- Cover Floor Option Added to Wall Edit
- Deck Framing Is Displayed and Extracted When the Floor Framing Generate Drawing Is Used
- Extensions and Dimensions Can Be Added to Framing Members
- Footing Lines in Floor System Mode Added
- Joist Hanger Control Added for Each End of a Floor Joist



Floor System Items Display in Shaded Fill

- Sister Joist Command Added
- Show Polygon Shaded in Visible Items Will Shade Flooring
- Subfloor Available to Dimension and Extension in Floor System Mode
- Type Erase Entry for Slab Footing Added

INTERIORS

- Additional Wall Covering Icons Added
- Offset Property Added to Crown Mold
- Profile Preview Included in Draw Dialog

LAYERS

- Ability to Lock Layers Feature Added
- Default Layer Added to the Setup Dialog
- Layer Names Can Be Specified for Item Types in Export Files
- Layer Setup Dialog Accessible Directly from the Toolbar



Unlimited Number of Layers Can Be Created

- Layers Added to Type Erase
- Multiple Selection Enabled on Setup Dialog
- Print Pen Options Added to a Layer Set-Up to Override Other Pen Settings
- Select Layer Added to Options Menu
- Unlimited Number of Layers Can Be Created

MISCELLANEOUS

- Add Product Code Added to the List of Password Protected Configuration Settings
- Glulam Lumber Tables Added
- SoftPlan Will Close Any Open SoftView Windows on Exit
- Tangents of Circles and Arcs Added to Snap

MODES

- SoftList Mode Added
- User Modes Display Wall Footings

MOVE

- Align to Edge Can Access Walls on an Overlaid Drawing
- Lock State Is Maintained When More Than One Item Is Moved in Succession
- Move of Angled Dimensions With Tails Improved
- Select Base Point Move Added to the Status Bar When Move Block Is Used
- Shapes Will Attach to Box, Circle, Triangle, And Polygon

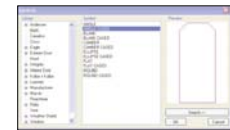
NOTES

- Auto Label Wall Only Displays Significant Digits of the Height
- Framing Schedule List Dimensional Lumber Rounded
- Multi Format Note Added
- Print Pen Default Override Added to Edit Dialog
- Regenerate Schedule Command Added

- to the Schedule Edit Dialog
- Review Note Dialog Is Resizable

OPENINGS

- 8' Doors Have Been Added to the Default Libraries
- Arch Chamfered Maintains the Size of the Chamfer As the Width of the Arch Is Changed
- Baseboard Wraps Around Arch Openings if No Other Trim Is Added
- Bottom of Opening Position Field Added
- Cased Openings Added to Arch Library
- Center Opening Now Asks to Center on the Inside of the Room or the Outside of the Building Where Applicable
- Colonial Trim for Openings Added to Profiles
- Corner Blocks Added to Opening Trim
- Double Entry Doors Added to Default Library



Cased Openings Added to Arch Library

- Elevation Opening Trim Can Be Added to Layers and Building Options
- Ellipse Shaped Openings Have Multiple Radii
- Face Sliding Door Type Added
- Grille Thickness Option Added
- Grilles on Polygon Type Opening Improved
- Header Span Tables Updated to 2006 IRC
- Interior Trim Has All the Properties of Exterior Trim Including Profiles, Corners, and Overhang
- Number of Grilles Can Be Specified
- Only Openings Included in SoftList Appear on the Opening Schedule
- Opening ID Placement Improved
- Opening Offset Within Wall Thickness Set at the Instance Level
- Opening Schedule Will List Frame Width (Jamb Size)
- Opening Size Placement Has Been Refined
- Opening Text, Product Code, ID, Size, Rough

- Opening Can Be Automatically Added to Saved Elevations

- Opening Trim Can Be Inset into the Wall as With Frieze, Corner Boards, and Banding
- Opening Trim on Interior Non Symmetrical Walls Places Interior Trim On Both Sides of the Wall
- Prairie Style Grille Added
- Profile Mode Highlights the Opening Being Edited
- Renumber Opening ID's Command Added
- Screen Option Added for SoftList
- Separate Interior Trim Control Added for Above, Below, And Sides
- Tall Doors Added to Libraries
- Taper Option Added to Trim
- Tempered Glass Column Added to Opening Schedule
- Trim on Complex Shapes Improved
- Trim on the Top or Bottom of an Opening Can Be Extended Past the Trim on the Side
- Wood Sill Option Added



Only Openings Included in SoftList Appear on the Opening Schedule

PAINT

- Arc Cords Do Not Act as a Paint Boundary
- Line Styles Maintained When Pattern Is Defined
- Paint and Shade Break Lines Use the Shape Auto Terminate Setting
- Paint Seed Point Added to Visible Items
- Solid Paint Is Placed "Behind" Other Items on a Print

- .TIFF and .PNG File Format Supported
- 20 Columns Added to Library



20 Columns Added to Library

- Adjust Height to Fit Beam Will Reference Beams on Other Floors in the Assembled Floor List
- Anchor Option Added
- 'H' Column Added to Structural Library
- Pen Setting Added for Post, Post Pad, and Post-Solid Fill
- Pressure Treated Posts Added to Structural Library
- Type Erase Entry Added

PRINT

- @Print Commands Added for Project Information Entered Under File-Project Information
- @Scale Print Command Added
- Fit to Page Considers Overlaid Drawing When Sizing for the Page
- Joist Items All Have Individual Pen Selections Added
- Last Printer Used Will Be Remembered
- Overlay Print Pen Selection Has Been Added
- Pen Settings Added for Shelf, Note, Room and Cabinet Counter Top
- The Last 5 Custom Print Scales Are Maintained on a Drop Down List
- RAILINGS
- Deflection Option Added
- Intermediate Post Option Has Been Added
- Plan Position Option Added to Hand and Toe Rail Allowing Placement Inside, Outside, or Center

- Posts, Spindles, and Rails Can Have Different Materials Assigned
- Railings Adjacent to Walls Are Automatically Added as Handrails, Rails Not Adjacent To Walls Are Automatically Added as Guardrails
- Spindle Width Can Be Controlled on a Per Railing Basis
- Undo Improved

REVIEW

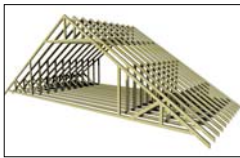
- 3D Review Added
- Batch Export Option Allows Multiple Drawings to Be Selected and Utilize the Same Setting
- Box Added to Markup
- .DWF Import and Export Added to Review
- Files Created in Room Mode Display Properly
- Mark-Up Arrow Added

ROOF

- Adjust a Roof Reference Point onto a Curved Wall and the Roof Edge Becomes Curved
- Apply Gable Command Added
- Arc Roof Profile Improved
- Auto Roof Improved
- Auto Roof Works Across Multiple Floors
- Auto Stick Frame; Placement Improved
- Clip Roof to Wall Command Added
- Color Added to Roof Planes in Plan
- Cricket Placement on Intersect Roof Edges Improved
- Dimension and Extensions Added to Valley/Ridge of a Double Hip
- Dominate Selection Added to Roof Edge Edit
- Draw Roof Plane (3 Sided) Added
- Dutch Gable Extensions and Dimensions Can Be Added
- Dutch Gable Roof Improved
- Dutch Gable Hip Portion of the Dutch Gable Can Have a Pitch Different from the Adjacent Hip Roof Planes
- Edit Roof Edge Easier to Select from SoftView
- False Gables That Reference a Beam Move Up the Roof When Moved
- Fascia & Soffit Improved on Multiple Floor Roof
- Fascia Extraction Improved
- Fit to Roof Works on a False Gable
- Fit Wall to Roof on Multiple Floor Roofs Improved
- Gable Roofs That Are Offset and Intersecting Are Improved
- Gable Vents Have the Same Trim Options as Regular Openings
- Gutter Can Be Added to a Roof Edge That Does Not Have a Fascia
- Intersect Edges Can Have Two Pitches
- Match Roof Planes Automatically Sets the Wall to Fit to the Roof Plane
- Match Roof Planes Command Improved
- Plate Heights Display Different Heights in Different Colors
- Reference Points Set to Ignore Wall Display in Construction Color
- Ridge Can Be Extensioned and Dimensioned
- Ridge Cap Entry Added to SoftView Extraction Options Dialog
- Roof Edges With Horizontal and Vertical Pitches Are Ignored When the Pitch of the Entire Roof Is Changed
- Roof Type Option Added to Edit (Cricket, Saddle, False Gable, Bay and Opening)
- Saddle Edit Improved
- Shed Roof Fascia & Soffit Formation Improved
- Shed Roof Formation Improved
- Snap Points Added
- Soffit Formation Improved
- Soffit on Roof on Opening Improved
- Type Erase Entry for Roof Added
- Valleys Formed By Intersecting Planes of Different Roofs Display in Plan
- Walls Used in Multiple Floor Roof Are Available to Snap

ROOF FRAMING

- Attic Truss Type Added
- Extension and Dimension Can Be Added to Framing Members
- Fascia and Soffit Will Clip Rafter Ends
- Hip Sets Automatically Group the Members Together
- Roof Framing Sections Save as Board Ends



Attic Truss Type Added

ROOM

- Butler Pantry, Storage Room, Screened Porch, Deck Room, Game Room, Patio, Mud Room, and Hearth Room Added
- Ceilings Added to Items That Are Placed When a Room Is Used
- Design Size Option Added
- Fill Can Be .Jpg, .Bmp, .Tif, or .Png Textures
- Pen Setting Added to Room Labels
- Room Finish Schedule Added
- Room Names Have Access to Text Properties: Bold, Italic, and Hollow and All Underline Styles
- Room Names Reverse
- Symbols Can Be Moved in Room Mode
- Type Erase Includes Individual Rooms

SHAPES & SOLIDS

- Invert option Added to Solids
- Pyramidal Frustum Added

SITE

- Generated Grade Lines Automatically Display a Shot Point at Each End Indicating Height
- Grade Lines Can Be Drawn as a Spline
- Grade Lines Slope Site by Default
- Intersection of Two Polys Added to Snap



Reverse Option Added to Site Line

- North Arrow Direction Can Be Changed via Edit of the Arrow Itself
- North Arrow Symbols Automatically Point North
- Polygons Will Display as Shaded on Site Plans
- Reverse Option Added to Site Line
- Shot Points Display in the Same Color as the Item That They Modify
- Site Polygon Offset Field Allows Grade Lines to Slope Site
- Site Polygons Can Be Moved Up and Down in SoftView
- Site Work Polygons Can Be Entered Using the Options – Align Edge, Align Center, and Width

SOFTLIST

- Add Banner Command Added
- Beam Variable Beam Offset Min Added
- BuildSoft (Australia) Export Added
- BuildSoft Export Includes Item Field
- Can Pick Specific Symbols for a Costing Material
- Ceiling Board Under Stair Material Definition Added
- Color Options Added to Reports
- Comma Delimited Export Options Clarified
- Countertops List "Freeform" Separate From "Standard"
- Description Field Can Contain Text Rather Than the Material Size
- Edit Material List Is Expanded in a Spreadsheet Format to Show More Information
- End of Page Indicator Added
- Export to HTML Added
- Frieze Group Added
- Frieze Style Added
- Gable Vents Added to List

- Generated Report Has the Option to Clear Floor Stack Variables
- Group Stair Variable Has Center Stringer Added
- Group Wall Variable Wall Radius Added
- Header Material Definitions Added to Count Glulam, LVL, and LSL Opening Headers
- Highlight Material Command Added

- Item Field Expanded to 30 Characters
- Libraries and Tables Are Larger to Display More Information
- List Materials Command Added to the SoftList Tab of the Edit Dialog
- Multiple Rows Can Be Deleted from a SoftList Report
- On-the-fly Report Style Selection Has Been Added to the Material Configuration
- ODBC Connections Can Be Made to Outside Data Sources that Can Be Stored Externally to SoftList in any ODBC Compliant Database via the Price Table



Color Options Added to Reports

- Opening Trim Variable Added
- Path and Material Definition Are Now Shown in Report Window Caption Bar
- Print Range Added
- Printed Reports Have Access to the Variables Containing Company Contact Information
- Prompt Command Added to User Defined Variables
- Quoin Variables and Materials Added
- Railing Finish Variables Added; Riser, Tread, Stringer, Post, Spindle, Handrail, and Toe Rail Finish
- Report Columns Alignment Added
- Rod & Shelf Variables Added
- Roof Components Hip, Valley and Ridge Have Access to "Material Type" Variable
- Roof Sheathing Broken Down According to Sheet Thickness
- Shelf Material Added
- SoftList Materials Will Export to QuickBooks® Estimates And Purchase Orders
- SoftList Tab Added to Edit Dialog
- Stair Variable Stringer Depth Added
- Stone Wall Material Definition Added

- Symbol Id's Can Number Up to 99999
- Takeoff Highlight Tool Added
- Takeoff Types Material Definitions and Report Style Added
- Transoms Above Openings List on the Reports
- Trim Type Bottom Added SoftList
- User Variables Prompts Added Mid
- Wall Framing Can Be Listed on a Per Wall Basis
- Wood Sill Material Definition Added
- Visible Items (Drawing) Entry Added for SoftList Report

SOFTVIEW

- .3Ds File & SketchUp® Files Import/Export Added to SoftView
- .PNG Textures Can Be Used on 3D Models
- A Close SoftView Selection Is Available When a Model Is Extracting
- Add Floor System Added to Draw in SoftView
- Animations Can Be Created for Non Rendered Modes: Wire Frame, Visible Line, Shaded, Sketch, Illustrated, and Textured
- Assemble Floors May Contain Unlimited Number of Floors
- Auto Horizon Offset Option Added to Setup Options
- Backgrounds Can Be Defined for Each Different Mode of an Otherwise Identical View
- Center Focus Command Added to Camera Dialog
- Display Silhouette Render Option Added
- Distance Command Added to SoftView
- Draw Ceilings Added
- Draw Profile Command Added
- Go To Room Added To Build And Camera Menus
- Highlight Command Can Be Cancelled with the Esc Key
- Illustrated Mode Added
- Lighting Can Now Be Turned on or Off in Each Mode
- Lines Are Placed on Separate Layers Based on Type When Saving an Elevation or Section

- POV Export Added
- Relief Depth Property Added to Materials
- Save All Added to the File Menu
- Save Elevations, Sections, and Roof Plans Has an Option to Control What Items Are Replaced if a Previous Version of a Drawing Exists
- Sketched Mode Added
- Smoothing Option Added
- Snap Added
- Textures From the SoftView Model Can Now Be Exported into the .DWG or .DXF Format
- Texture Preview Speed Increased
- Texture Size Is Expressed as a Distance Value Rather Than a Magnification
- Transparent Option Uses a Dedicated Alpha Map File
- Type Erase Entry Added for SoftView Lights

STAIR

- Add Break Option Added
- Add Direction Arrow Option Added Stairs
- Add Riser Count Option Added; Automatically Places the "UP 14R" Designation on the Stair
- Ceiling Finish Option Added to Stairs
- Cross Sections Containing Stairs Will Automatically Have the Lines of the Stairs Grouped Together
- Hidden Option Added
- Landings Move In SoftView
- Link Floors Can Affect the Placement of Stairs on the Associated Floors
- Material Types Added to Stringer, Tread, and Riser
- Number of Center Stringers Option Added to Edit Stair
- Stringer Depth Option Added
- Stringer Recess Option Added
- Winder Stairs Added to the Library

SYMBOLS

- Always Face North Option Added to Symbol Definitions
- Attribute Fields Added to Symbols
- Chair Library Added
- Coffee Table Library Added

- Cuts Countertop Option Added to Symbol Configuration
- Details Symbols Added
- Dining Table Symbols Added
- Double Sided Fireplace Added
- Draw Select Works With Single Plane Symbols Such as Rendering Shrubs
- High Surface Count Tree Symbols and Matching Billboard Trees Added



High Surface Count Trees Added

- Manufacturer Libraries Added
- New Plant & Outdoor Furniture Libraries
- New Vehicle Symbols Added
- Sofa, Stool, & Bed Library Added
- Symbol Wizard Automatically Creates 2D Symbols of Imported 3D Symbols
- Symbols Will Snap Into Corners on Placement
- Tropical Trees Library Added
- Typical Details For 2 X 6 Framing Added to the Existing 2 X 4 Details
- Vent Libraries Replaced
- Visible In All Modes Added to the Edit Dialog

SYSTEM OPTIONS

- Archive Backups and Restores the Softview.cfg File Containing the Default SoftView Settings
- Option Added to Draw Dimensions & Extensions Automatically
- Rod & Shelf Options Added

TOOLS

- Adjust Wall Material Command Added
- Difference Command Added
- Fillet Works on Curved Walls
- Insert Polygon Edges Command Added
- Reduce Wall Join Tolerance Added

TYPE ERASE

- Items Added to Type Erase: Take Off, Layers, Building Options, Posts, Area Schedules, Electrical Legends, General Tables, Opening Schedules, Room Schedules, SoftList Report, Framing Schedules, SoftView Lights, Slab Footing, Rooms, Roof Poly, Elevation Openings
- Layers Added Type Erase
- Only Items Present In Drawing Display On Type Erase List
- Type Erase Images Added

VISIBLE ITEMS

- Paint Seed point added to Visible Items
- Display Print Pen Style option added
- Framing Schedules added
- Openings added
- Show Polygon Shading option added
- Walls Added

WALLS

- 6" Concrete Wall Definition Added to Lite
- Banding Finish Options Added
- Banding Profile Added
- Blocking (Framing) in Curved Wall Improved
- Cover Floor Option Added to Edit
- Corner Board Size Can Be Edited on an Individual Basis
- Curved Wall Appearance Improved in 3D
- Curved Wall Change Wall Properly Maintains the Outside Radius of the Wall
- Definition Option Added to Wall Edit Dialog
- Fit To Stair Command Added to the Edit Wall Dialog
- Inner Most Alignment Option Added to Change Wall and Edit Wall
- New Wall Textures Block Reversed Added
- Rake Bottom Command Added
- Select & Edit Multiple Fields at the Same Time on Wall Definition Dialog

- Step Wall Command Added
- Strapping Wall Material Added
- Stone Walls Added to the Extended Wall List
- Stucco B Added to Wall Materials
- Stud With Drywall on One Side Added to Remodelers Wall Definition
- Tar Material Added
- Wall and Beam Definitions Can Utilize Profiles
- Wall Join Tolerance of 0 allowed
- Wall Joins Improved in Situations Where Short Walls Join Each Other

WALL FRAMING

- Add Header Command Added
- Blocking on Raked Walls Improved
- Draw Select Will Select Individual Studs
- Framing Dimension Defaults Added to Character Setup
- Individual Studs Can Be Added, Removed, or Relocated
- Individual Studs Can Be Extensioned/Dimensioned
- Header Position Within Wall Thickness Added to Edit Dialog- Inside, Outside, Spaced
- Jack Stud Count Option Added & Number of Jack Studs Can Be Specified on Opening Edit
- Pocket Doors Framing Improved
- Studs Can Be Modified from 2x to 4x for Shear Wall Applications
- Snap Located Points on Individual Studs
- Stud Spacing of Individual Walls Can Be Changed
- Stud Thickness Can Be Changed on Individual Wall Types
- Studs and Modified Studs Display in Different Colors in Framing Mode
- **Zoom**
- Block Commands Such as Move Are Not Interrupted by Zoom



Other Products & Services

SOFTPLAN INTERACTIVE TRAINING CDS

The SoftPlan Interactive Training CDs were designed by our very own training staff for those who want to use SoftPlan to its full potential. These CDs are a complete hands-on training tool. Concepts can be understood through step-by-step explanations. Also, the CDs are a great supplement to the *Learning SoftPlan* training manual and make an excellent reference tool. The CDs are available in the Introductory, Intermediate, & SoftView levels.



SOFTPLAN TRAINING CLASSES

SoftPlan training classes are an excellent place for users to gain great hands-on experience, view step-by-step demonstrations, and network with other SoftPlan users. Training classes provide these and many other benefits and often count towards continuing education credits. SoftPlan offers classes with our qualified training staff across the United States. The classes are tailored to suit the individual user's background and experience with SoftPlan by covering material from beginner to advanced.

SOFTPLAN HOME PLANS WEBSITE

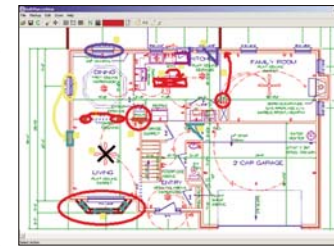


SoftPlan's online database of home plans presents an exclusive compilation of house plans in SoftPlan format. SoftPlan home plans offers a wide assortment of plans that will suit many styles and needs. The collection features plans from the nation's top residential designers providing the highest quality, and come in SoftPlan format. Both complete sets and conceptual plans are available. To view these homeplans, please visit www.softplanhomeplans.com.

SoftPlan's online database of home plans presents an exclusive compilation of house plans in SoftPlan format. SoftPlan home plans offers a wide assortment of plans that will suit many styles and needs. The collection features plans from the nation's top residential designers providing the highest quality, and come in SoftPlan format. Both complete sets and conceptual plans are available. To view these homeplans, please visit www.softplanhomeplans.com.

SOFTPLAN reVIEW

SoftPlan reView allows instant access to a SoftPlan drawing to view, comment, and mark-up the drawing by email on a PC or Pocket PC. SoftPlan reView will facilitate communication throughout the entire building process, as all of the architectural information will be available in a reView file for your clients, field personnel, trade contractors, engineers, and print shops. Communicate your design ideas to the client while providing your client access to redline a drawing. Also conveniently view a reView file on site using a Pocket PC. Record punch items, then load those mark-ups or comments directly back into the SoftPlan drawing. reView can be ordered on www.softplan.com.



SOFTPLAN USERS FORUM

SPLASH is provided as a communication channel between SoftPlan users allowing them to share knowledge and to discuss both technical aspects of the program as well as general construction techniques. The SPLASH site is an interactive way to improve your SoftPlan knowledge and meet other users. SPLASH features an online forum, a gallery where users can showcase their best work, and a classified section for placing ads. SPLASH is a free service available to all registered users of SoftPlan.

SOFTPLAN TECHNICAL SUPPORT



At SoftPlan, our highly trained support team has a background of architectural, construction, and computer knowledge and is equipped with in-depth knowledge and ready answers. Without question, they are the finest in the industry. Get help quickly and easily by calling, emailing, or faxing your questions free of charge for as long as you are using the current versions of SoftPlan. Our knowledgeable and courteous support staff will answer your SoftPlan questions promptly.

For Questions or to Upgrade:



Phone: 1-800-248-0164



Online: www.softplan.com